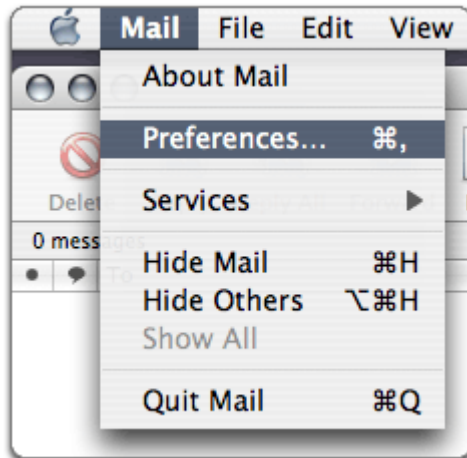
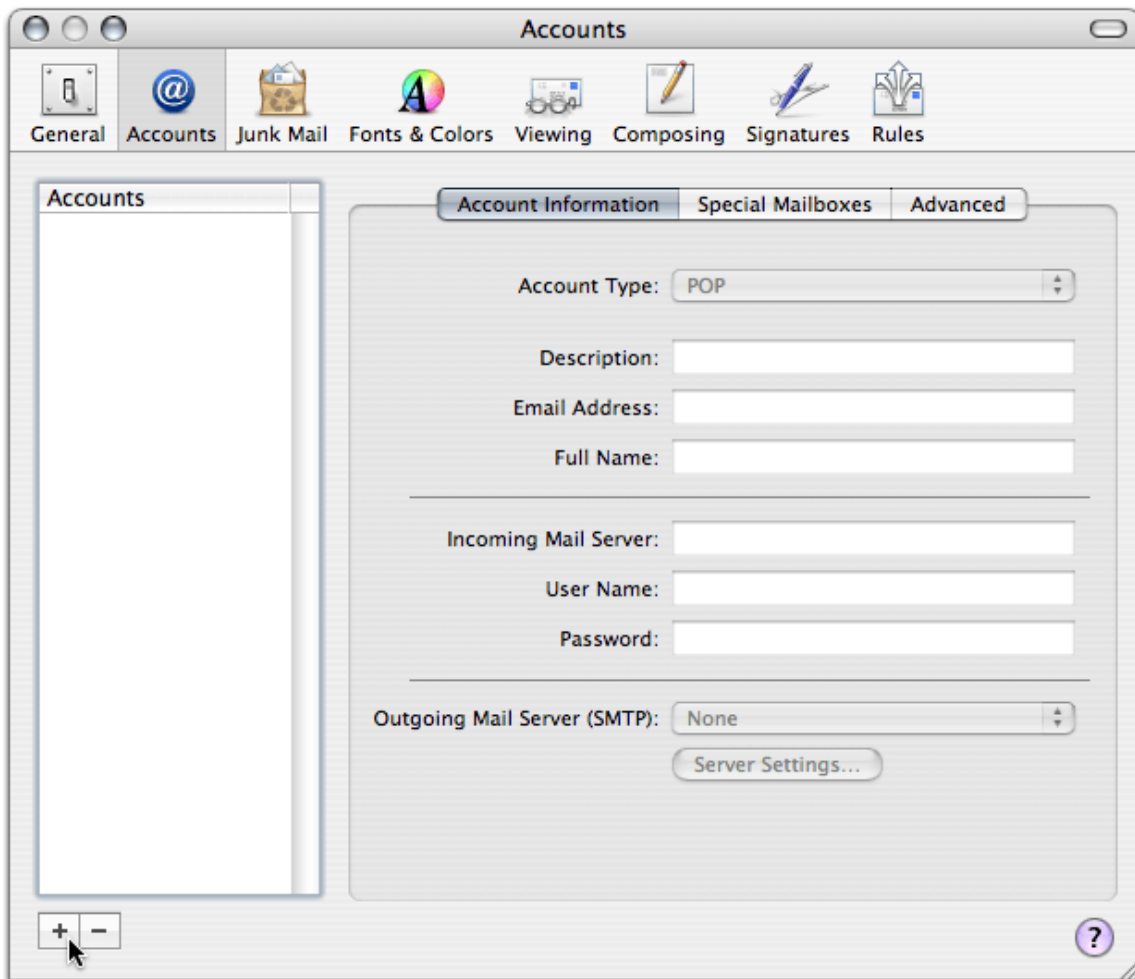


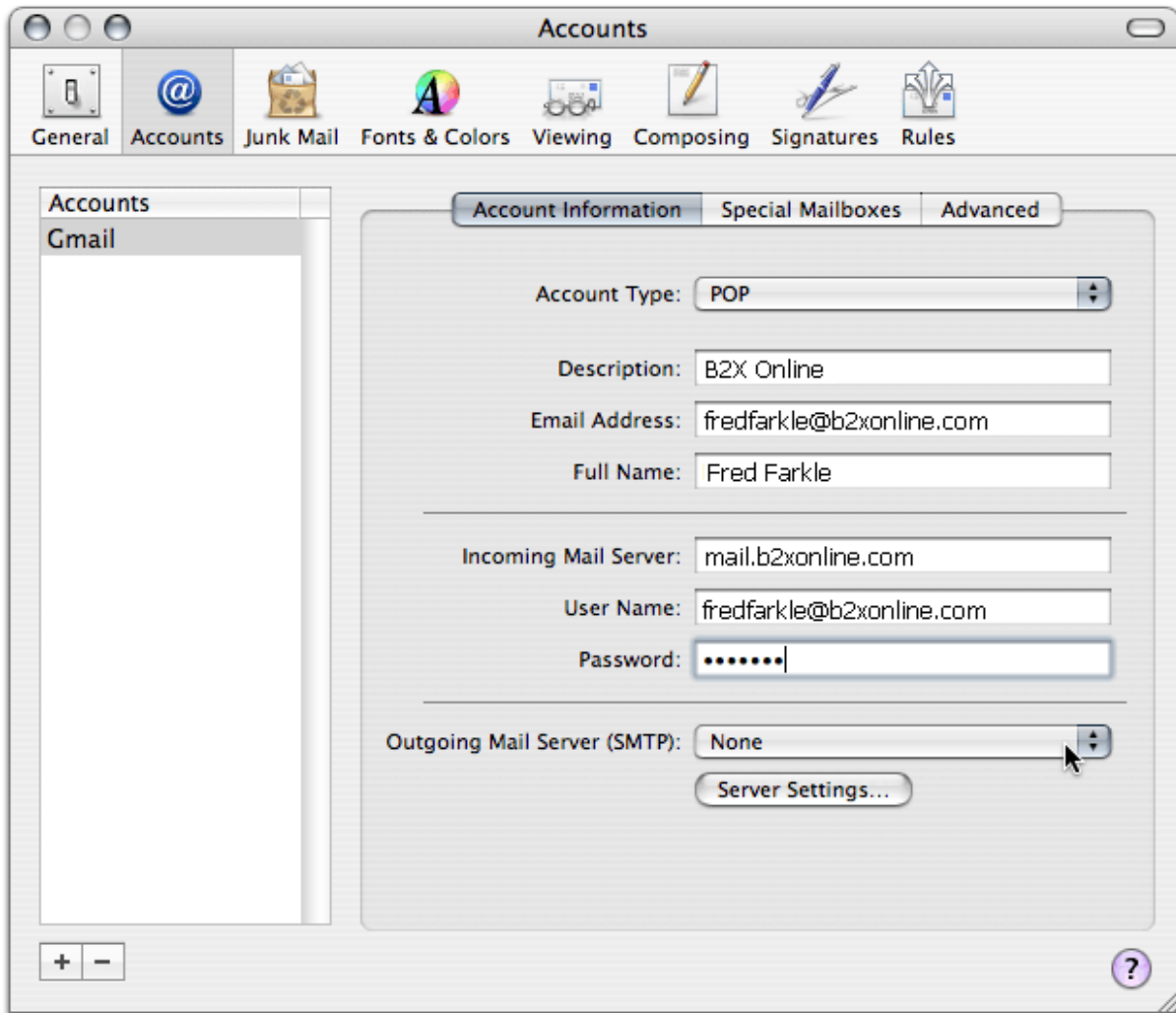
1. Open Apple Mail.
2. Click 'Mail,' and select 'Preferences...'



3. Open the 'Accounts' tab, and click the plus sign (+) along the bottom to add a new account.



4. Enter 'mail.b2xonline.com' in the 'Incoming Mail Server:' field.
5. Enter your username (including '@b2xonline.com') in the 'User Name:' field.
6. Enter your password in the 'Password:' field.



7. Select 'Add Server...' from the pop-up labeled 'Outgoing Mail Server,' and enter 'smtp.b2xonline.com' in the 'Outgoing Mail Server:' field.
8. Click 'OK.'
9. Click 'Send/Receive' and you should have a new piece of mail from B2X Online. There are instructions on how to change your password and check your mail from any Internet connection via a web browser.