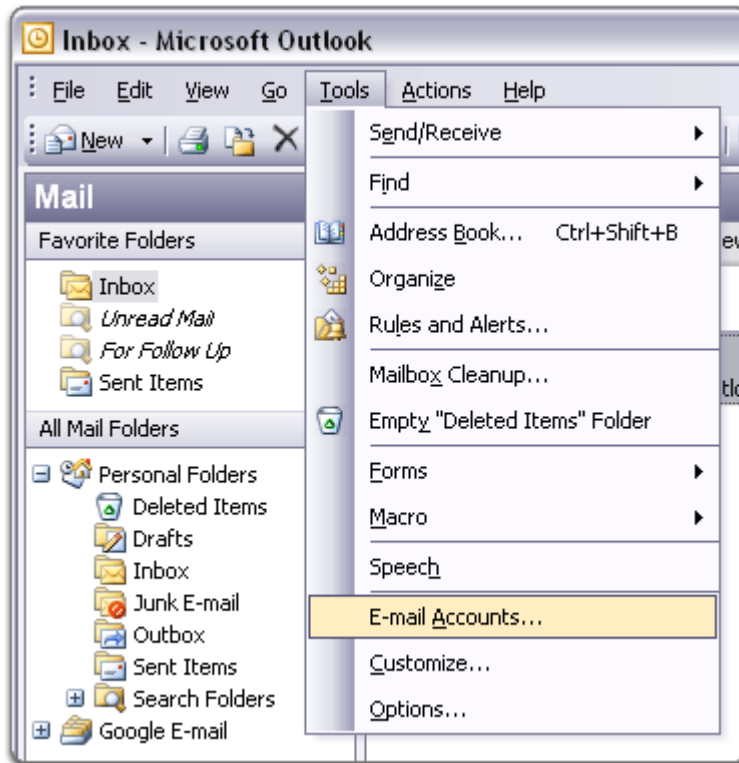
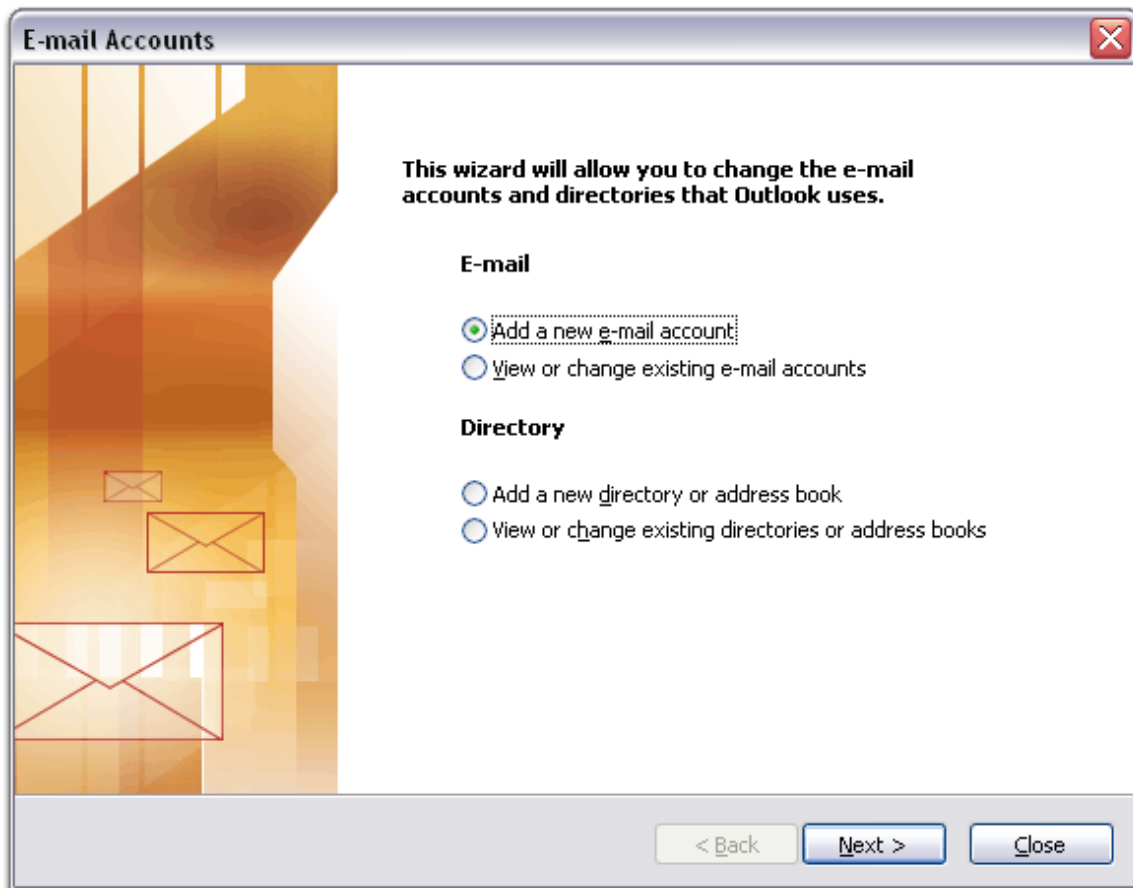


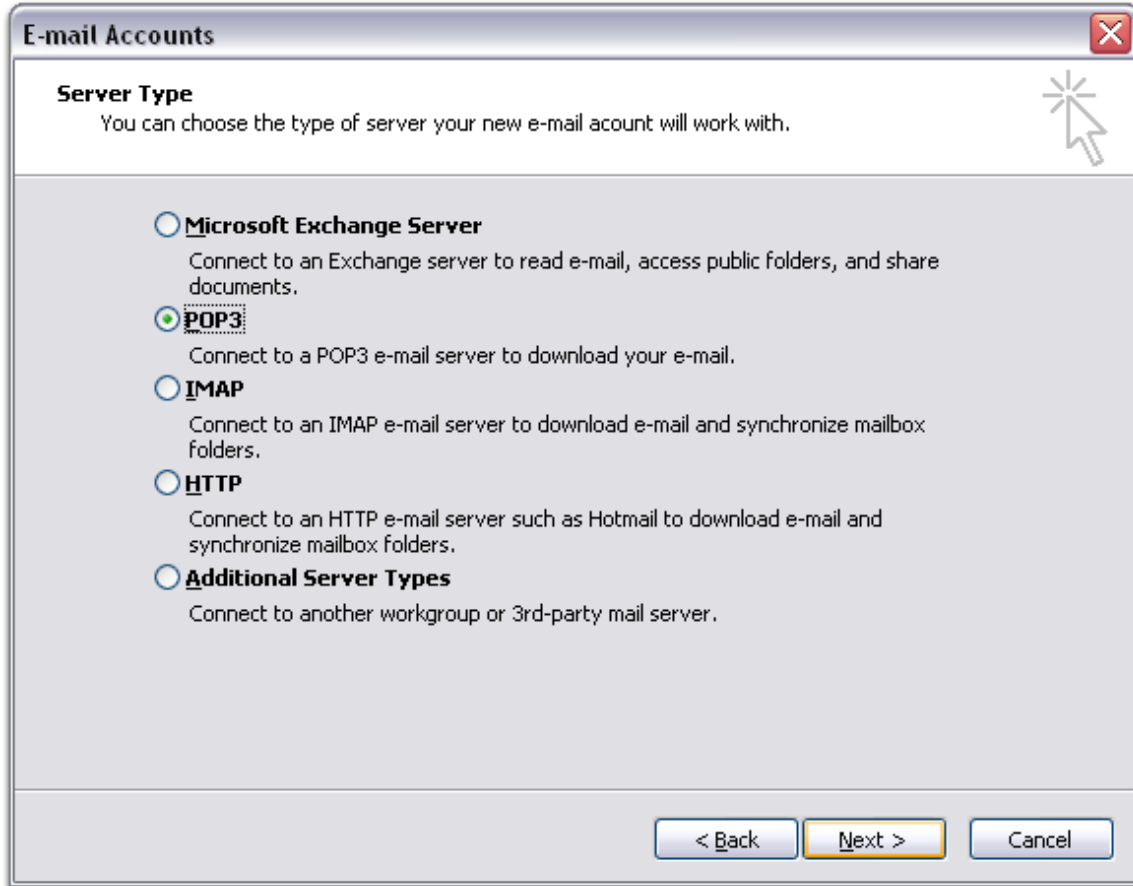
1. Open Outlook 2003.
2. Click the 'Tools' menu, and select 'E-mail Accounts...'



3. Select 'Add a new e-mail account,' and click 'Next.'



4. Choose 'POP3' as your server type by clicking the radio button, and click 'Next.'



5. Fill in all necessary fields to include the following information:

User Information

Your Name: Enter your name as you would like it to appear in the 'From:' field of outgoing messages.

Email Address: Enter your full email address (username@b2xonline.com)

Server Information

Incoming mail server (POP3): mail.b2xonline.com

Outgoing mail server (SMTP): smtp.b2xonline.com

Login Information

User Name: Enter your username (including '@b2xonline.com')

Password: Enter your password

The screenshot shows a window titled "E-mail Accounts" with a close button in the top right corner. Below the title bar, there is a section titled "Internet E-mail Settings (POP3)" with a sub-note: "Each of these settings are required to get your e-mail account working." To the right of this section is a mouse cursor icon. The main area is divided into four sections: "User Information", "Server Information", "Logon Information", and "Test Settings".

User Information	Server Information
Your Name: Fred Farkle	Incoming mail server (POP3): mail.b2xonline.com
E-mail Address: fredfarkle@b2xonline.c	Outgoing mail server (SMTP): smtp.b2xonline.com

Logon Information	Test Settings
User Name: fredfarkle@b2xonline.c	After filling out the information on this screen, we recommend you test your account by clicking the button below. (Requires network connection)
Password: *****	
<input checked="" type="checkbox"/> Remember password	<input type="button" value="Test Account Settings ..."/>
<input type="checkbox"/> Log on using Secure Password Authentication (SPA)	<input type="button" value="More Settings ..."/>

At the bottom of the window are three buttons: "< Back", "Next >", and "Cancel".

6. Click 'Next,' and then click 'Finish.'

7. Click 'Send/Receive' and you should have a new piece of mail from B2X Online. There are instructions on how to change your password and check your mail from any Internet connection via a web browser.